

## Rose Hill Terrace

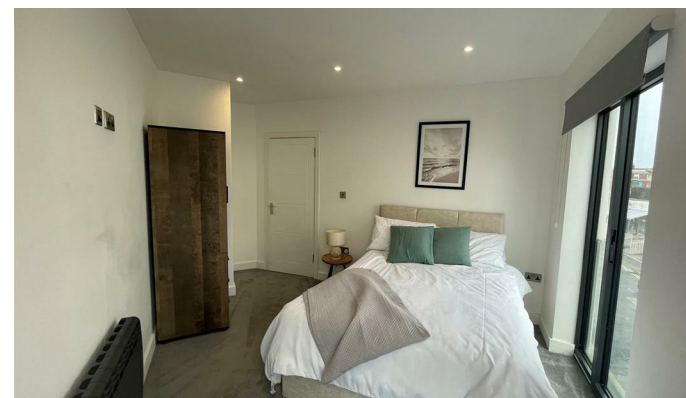
, Brighton BN1 4JL

- AVAILABLE MARCH
- Fully Fitted Kitchen with Integrated Appliances
  - Located by London Road
  - Second Floor
- Students and Company Welcome
- Modern Finish Throughout
  - Double Bedrooms
- Excellent Transport Links
- Furnished Option Available

**£1,800 PCM**



**Local Authority  
Council Tax Band  
EPC Rating**



**Moretons Lettings Office**  
30-31 North Street, Brighton,  
East Sussex, BN1 1EB

### **Contact**

Agents Note: Whilst every care has been taken to prepare these particulars, they are for guidance purposes only. All measurements are approximate and for general guidance purposes only and whilst every care has been taken to ensure accuracy, they should not be relied upon and potential buyers/tenants are advised to recheck the measurements.